

# Using Tattered Lace™ Embossing Folders with the Joy Trouvaille Die Cutting Machine



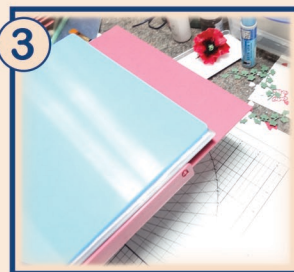
Each Tattered Lace™  
8" x 8" embossing folder  
is a perfect fit for the Joy  
Trouvaille die cutting machine.



1  
Place your card / paper inside the embossing folder, place this between your Black Embossing Plate (B) and your Blue Cutting Plate (D) as shown.



2  
Place the sandwich into the machine, making sure that all plate edges are level.



3  
The embossing folder sits above the lip on the platform of the machine as shown.



4  
Run the sandwich through the machine and remove all plates along with the embossing folder.



5  
The design will emboss evenly across the cardstock even though it is placed above the lip.



6  
The folder will give perfectly even embossing across the whole design.

We hope you find this guide helpful,  
if you require any additional help  
please email [info@tatteredlace.co.uk](mailto:info@tatteredlace.co.uk)  
or call 01246 251212

*Tattered Lace*™ **DIES**  
Designed by Stephanie Weightman  
[www.tatteredlace.co.uk](http://www.tatteredlace.co.uk)