

# CARD SHAPES

Tattered  
Lace<sup>®</sup>

## CARD ONE

### *What you'll need:*

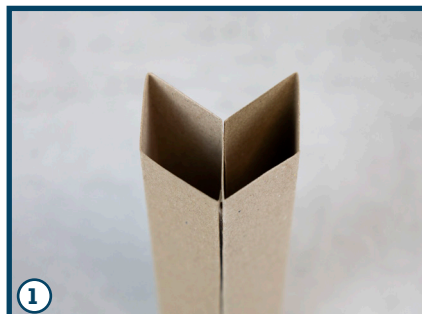
- 3D Pop-Up Star die set
- Setting The Scene die set and charisma
- Circle die set
- Craft Master Kraft Card – 12×12
- Craft Master Premium Pure Print 250gsm White cardstock
- Setting the Scene collection download
- White ribbon
- Wooden button

**1** Using the Pop-Up Star die set, cut the Card Base five times from kraft cardstock. Fold up each card base to create a star section as shown.

**2** Repeat step one for the rest of the card bases. Cut the Mat die twenty times from backing paper. Mat four of each mat onto the top four panels of each of the card bases. Start to build up the star by gluing the plain panels of the card bases together. Repeat until you have a complete star.

**3** Cut a 7.6cm circle from kraft cardstock and a 7.2cm circle from backing paper. Using the Setting The Scene die set, cut the Wheelbarrow and Hanging Basket dies from the charisma. Trim the wheelbarrow die cut to match the curve of the circle mat.

**4** Mat the circles together. Mat the hanging basket and wheelbarrow onto the circle mats with 3d glue gel and mat onto the front of the star card. Tie a triple loop bow from white ribbon and mat onto the top of the card. Mat a button on top of the ribbon.



# CARD SHAPES

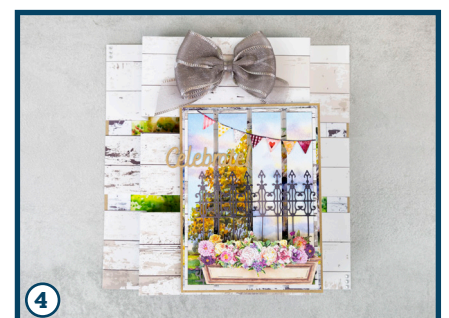
Tattered  
Lace<sup>®</sup>

## CARD TWO

*What you'll need:*

- 3D Pop-Up Star die set
- Setting The Scene die set and charisma
- Craft Master Kraft Card – 12x12
- Craft Master Premium Pure Print 250gsm White cardstock
- Setting the Scene collection download
- Grey ribbon
- Diamante gems

- 1** Cut a 20cm square from kraft cardstock. Cut a 19.5cm square from a scene paper and mat onto the square. Cut two 25cm x 6cm rectangles and one 25cm x 4.8cm rectangle from wood effect paper. On all rectangles, measure in at 3.5cm and 6cm from both ends and score and fold. Mat the rectangles onto the card as shown.
- 2** Cut a 10.8cm x 14.3cm rectangle from kraft cardstock and a 10.4cm x 13.9cm rectangle from scene paper. Mat the rectangles together. Using the Pop-Up Star die set, cut the mat die four times from scene paper. Mat onto the rectangles with foam tape.
- 3** Using the Setting The Scene die set, cut one Bunting, one Trough, two Fence and five Flowers from the charisma. From the Pop-Up Star die set, cut the Celebrate die twice from kraft cardstock.
- 4** Mat the die cuts onto the rectangles with 3d glue gel and mat the rectangle onto the card. Tie a triple loop bow from grey ribbon and mat onto the card. Finish by adding diamante gems to the corners.



# CARD SHAPES

Tattered  
Lace<sup>®</sup>

## CARD THREE

### *What you'll need:*

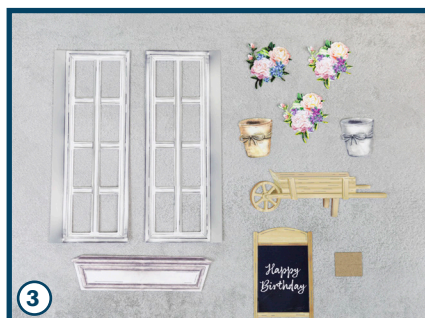
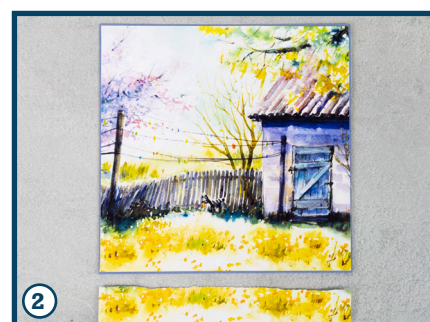
- 3D Pop-Up Star die set
- Setting The Scene die set and charisma
- Craft Master Kraft Card – 12x12
- Craft Master Premium Pure Print 250gsm White cardstock
- Craft Master Printable Acetate
- Setting the Scene collection download
- White ribbon

**1** Cut, score and fold white cardstock to create a 21cm x 20cm tent card. Cut a 20.3cm x 19.3cm rectangle from kraft cardstock, a 19.8cm x 18.8cm rectangle from acetate and a 20cm x 19cm rectangle from white cardstock. Using the Setting The Scene die set, cut the Lace Panel die into the bottom of the white rectangle. Mat the acetate rectangle behind the white rectangle and mat onto the kraft rectangle. Mat onto the card with foam pads.

**2** Cut a 13.3cm x 13.1cm rectangle from blue cardstock and two 13cm x 12.8cm rectangles from a scene paper. Tear one of the scene rectangles at 2cm up from the bottom. Mat the other scene paper onto the blue rectangle.

**3** Using the Setting The Scene die set, cut two Windows (trim off the tabs), one Trough, two Flower Pots, one Wheelbarrow, three Flowers and one Chalkboard from the charisma. Cut the Chalkboard stand from kraft cardstock.

**4** Mat the die cuts onto the scene rectangle with 3d glue gel. Mat the window die cuts either side and mat the rectangles onto the



card with foam tape. Attach the chalkboard stand to the back of the chalkboard and mat onto the

bottom corner. Tie a triple loop bow from white ribbon and mat onto the card.

# CARD SHAPES

Tattered  
Lace<sup>®</sup>

## CARD FOUR

*What you'll need:*

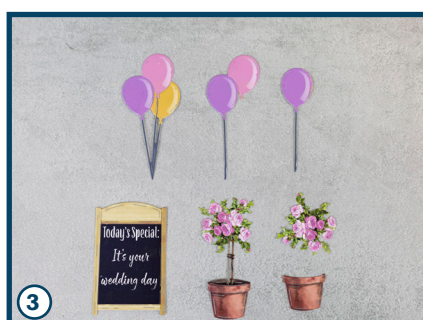
- 3D Pop-Up Star die set
- Setting The Scene die set and charisma
- Craft Master Premium Pure Print 250gsm White cardstock
- Craft Master 12×12 Cardstock Pack – Damson Crumble & Apple Pie
- Setting the Scene collection download
- Purple ribbon

**1** Cut, score and fold white cardstock to create a 16cm x 17.4cm rectangle tent card. Cut a 14.8cm x 16.2cm rectangle from purple cardstock and a 14.4cm x 15.8cm rectangle from backing paper. Mat together and mat onto the card.

**2** Cut a 12cm x 14cm rectangle from a scene paper. Using the Pop Up Star die set, cut the Card Base with Insert Panel dies in all panels except the outside panels from white cardstock. Fold the card base at the solid panels and mat onto the back of the scene rectangle.

**3** Using the Setting The Scene die set, cut three Balloons, two Small Trees and one Chalkboard from the charisma. Trim the die cuts as shown to create decoupage. Build up the decoupage with 3d glue as shown.

**4** Mat the rectangle onto the card. Arrange the die cuts onto the card and mat with 3d glue gel. Tie a triple loop bow from purple ribbon and mat onto the card.



# CARD SHAPES

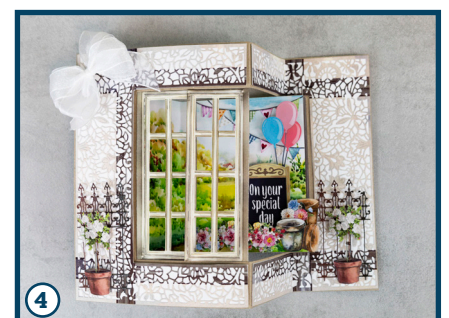
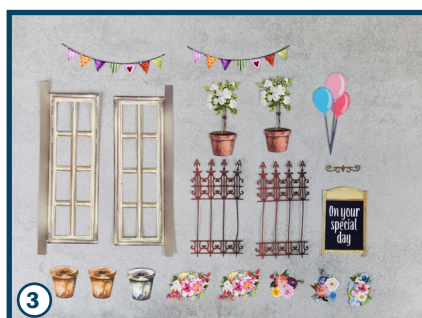
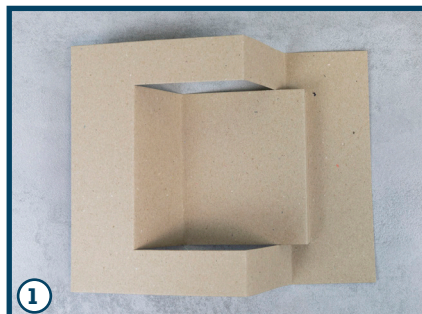
Tattered  
Lace<sup>®</sup>

## CARD FIVE

*What you'll need:*

- Setting The Scene die set and charisma
- Craft Master Kraft Card – 12×12
- Craft Master Premium Pure Print 250gsm White cardstock
- Setting the Scene collection download
- White ribbon

- 1** Using the Setting The Scene die set, cut the Card Base die from kraft cardstock and fold on the score lines to create the card.
- 2** Cut the Lace Panel and Mat dies together twice from scene paper. Cut the Mat die twice from white cardstock. Mat the lace panels onto the mats. Cut the Card Base from a scene paper and then trim out the scene, this way the score line will be in the right place. Trim off the right fold to leave a thin rectangle.
- 3** Cut three Pots, two Rose Trees, two Railings, two Windows, two Bunting, one Chalkboard and four Flowers and one Balloon from the charisma.
- 4** Mat the lace panels and scene rectangles onto the card base. Mat the die cuts onto the card base with 3d glue gel. Tie a multi loop bow from white ribbon and mat onto the left of the card.



# CARD SHAPES

Tattered  
Lace<sup>®</sup>

## CARD SIX

### *What you'll need:*

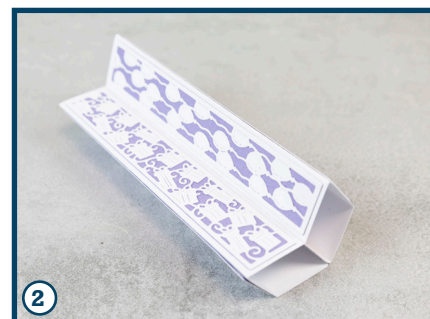
- 3D Pop-Up Star die set
- Setting The Scene die set and charisma
- Cartouche Labels die set
- Craft Master Premium Pure Print 250gsm White cardstock
- Craft Master 12×12 Cardstock Pack – Damson Crumble

**1** Using the Pop-Up die set, cut the Card Base three times from white cardstock. Fold up each card base to create a star section as shown.

**2** Cut the Mat die twelve times from purple cardstock. Cut the Balloon Insert and Mat die six times and the Parcel Insert and Mat die six times from white cardstock. Mat the die cuts onto the mat panels and mat four of each onto the top four panels of each of the card bases. Repeat for the other card bases.

**3** Using the Cartouche die set, cut the one Small Label from white cardstock and one Large Label and Best Wishes die from purple cardstock. Using the Setting The Scene die set, cut the Balloon die twice from white cardstock and once from purple cardstock. Trim the die cuts as shown. Build up the decoupage and mat together with 3d glue gel.

**4** Build up the star by gluing the plain panels of the card bases together. Repeat until you have a complete star. Mat the labels and the sentiment together and mat onto the card with the balloons with 3d glue gel. Using the Setting The Scene die set, cut three Flowers from the charisma and mat onto the card with 3d glue gel.



# CARD SHAPES

Tattered  
Lace<sup>®</sup>

## CARD SEVEN

*What you'll need:*

- 3D Pop-Up Star die set
- Setting The Scene die set and charisma
- Cartouche Labels die set
- Craft Master Premium Pure Print 250gsm White cardstock
- Craft Master 12x12 Cardstock Pack – Damson Crumble & Apple Pie
- Backing paper

- 1** Cut four 18cm square from white cardstock and score and fold in half vertically. Cut eight 8.5cm x 17.5cm rectangles from green cardstock and eight 8cm x 17cm rectangles from backing paper. Mat the backing paper rectangles onto the green rectangles and mat two onto each folded square.
- 2** Using the Pop Up Star die set, cut the Card Base from white cardstock and cut the Floral insert into the third panel in on one side. Turn the panel over and cut the Floral insert into the end panel.



Cut the Floral Insert and Mat die from white cardstock and the Mat die from purple cardstock. Mat together and mat onto the card base. Repeat this five times.

- 3** Mat two card bases together as shown.
- 4** Using the Cartouche Labels die set, cut two Large Labels from green cardstock and two Medium Labels from sentiments.

Using the Setting The Scene die set, cut three Pots and one Flowers from the charisma.

- 5** Mat each card together back to back. Mat each star into the middle of each folded card.
- 6** Mat the labels together and mat onto either side of the card. Mat the die cuts onto the labels with 3d glue gel. Tie a triple loop bow from white ribbon and mat onto the card.



# CARD SHAPES

Tattered  
Lace<sup>®</sup>

## CARD EIGHT

*What you'll need:*

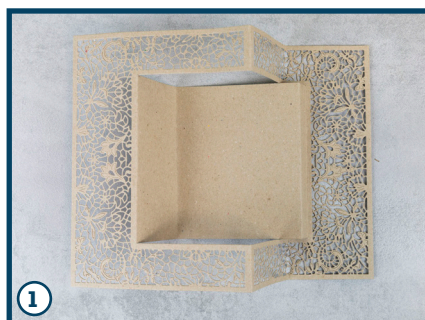
- Setting The Scene die set and charisma
- Cartouche Labels die set
- Craft Master Premium Pure Print 250gsm White cardstock
- Craft Master Kraft Card – 12×12
- Setting the Scene collection download
- Craft Master Printable Acetate
- Pink ribbon

**1** Using the Setting The Scene die set, cut the Card Base from kraft cardstock and cut the Lace Panel into each end of the card base. Fold the card base along the score lines to create the card.

**2** Cut the Mat die twice from acetate. Cut the Card Base from a scene paper and trim out the scene, this way the score lines are in the correct place.

**3** Using the Cartouche Labels die set, cut a Small Label from white cardstock and a Medium Label and the With Love sentiment from kraft cardstock. Using the Setting The Scene die set, cut one Wheelbarrow, cut one Trough, four Flowers, three Pots, two Ivys and one Rose Tree from the charisma.

**4** Mat the acetate panels behind the lace panels of the card base. Mat the folded scene onto the middle of the card base. Mat the labels and sentiments together and mat onto the card. Mat the die cuts onto the card with 3d glue gel. Tie a triple loop bow from pink ribbon and mat onto the card.



# CARD SHAPES

Tattered  
Lace<sup>®</sup>

## CARD NINE

*What you'll need:*

- Setting The Scene die set and charisma
- Cartouche Labels die set
- Craft Master Premium Pure Print 250gsm White cardstock
- Setting the Scene collection download
- Pink ribbon

**1** Using the Setting The Scene die set, cut the Card Base twice from a scene paper. Fold on the score lines of one card base to create the card base.

**2** Using the Mat die, cut two from a scene paper and trim one of the die cuts to fit on the right side of the card. Trim the other card base on the score lines to create two rectangles and tear 2cm up from the bottom.

**3** Cut three Hanging Baskets, six Ivy, one Wheelbarrow, two Bunting, three Flowers and four Pots from the charisma. Using the Cartouche Labels die set, cut the Best Wishes die from white cardstock.

**4** Mat the die cuts onto the card as shown with 3d glue gel. Tie a triple loop bow from pink ribbon and mat onto the left of the card.

