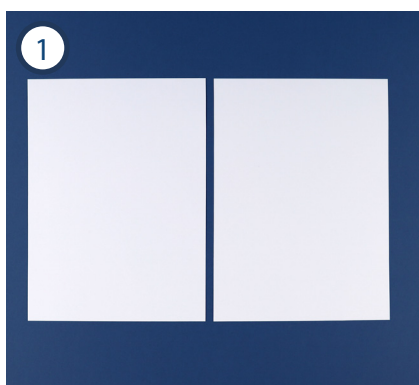
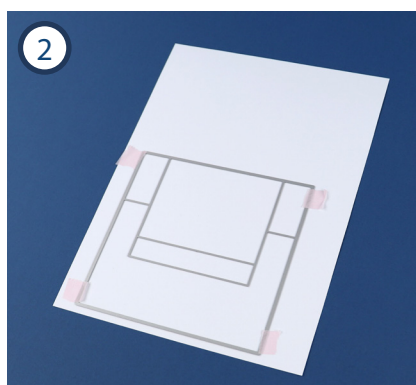


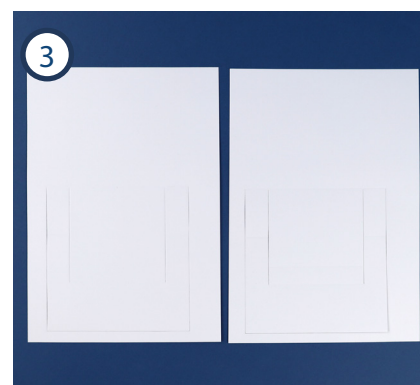
# Easel Extension Card - A4



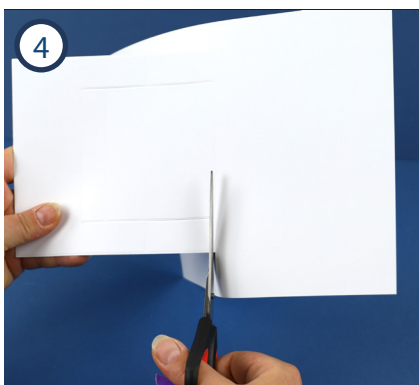
1. Take two A4 pieces of your chosen cardstock.



2. Secure the die on one end of the cardstock.



3. Run through your die cutting machine. Repeat Steps 2 and 3 on the other piece of cardstock.



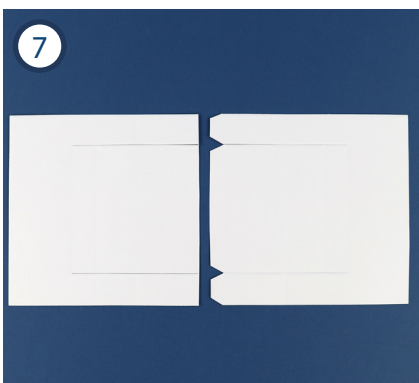
4. Trim the excess from one die cut in a straight line.



5. On the other die cut, trim to leave tabs on one end.



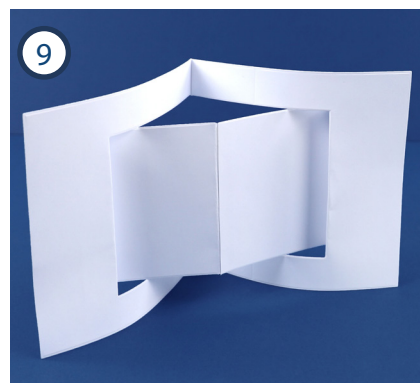
6. Apply adhesive tape to the tabs.



7. Lay the die cuts end-to-end with the tabs in the middle.

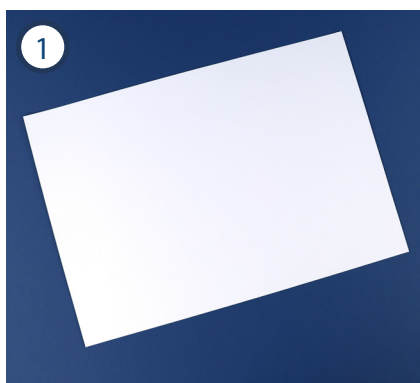


8. Mat the two pieces together.



9. Fold as desired along the die lines.

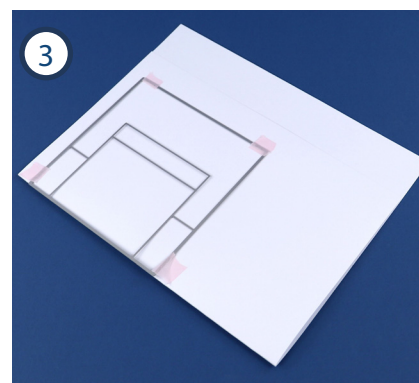
# Easel Extension Card - A3



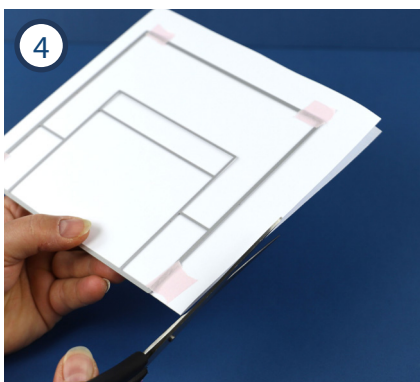
1. Take an A3 sized piece of your chosen cardstock.



2. Score and valley fold at 20cm from one end.



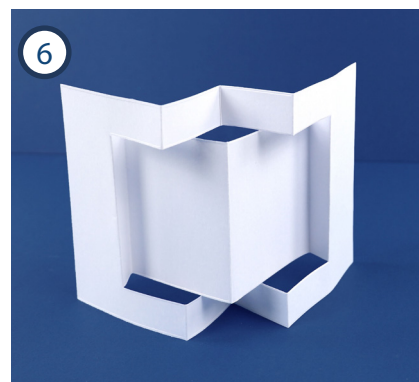
3. Secure the die to the cardstock on the smaller side, lining the edge of the die with the fold.



4. Trim the excess cardstock from around the die.



5. Run through your die cutting machine.



6. Fold as desired along the die lines.