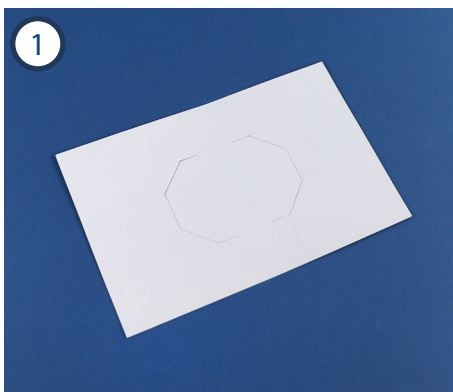
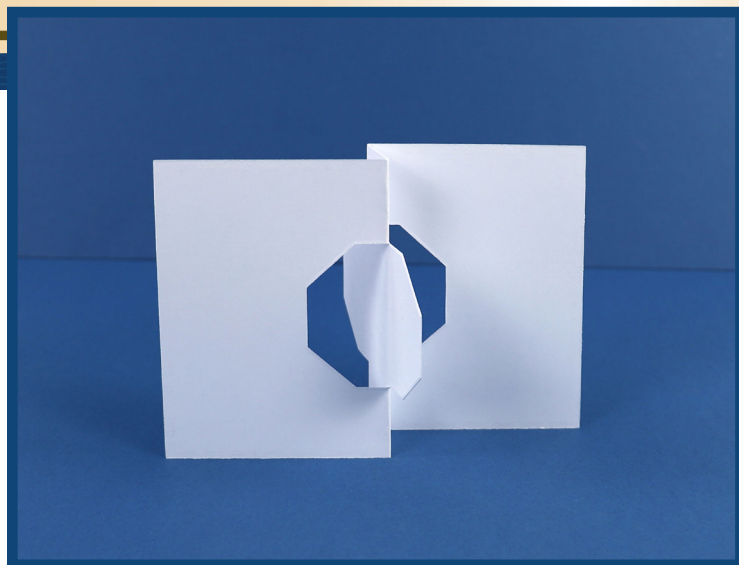
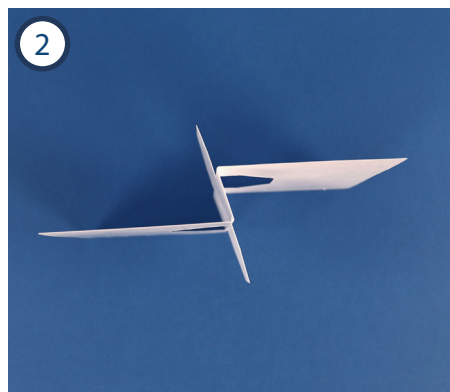


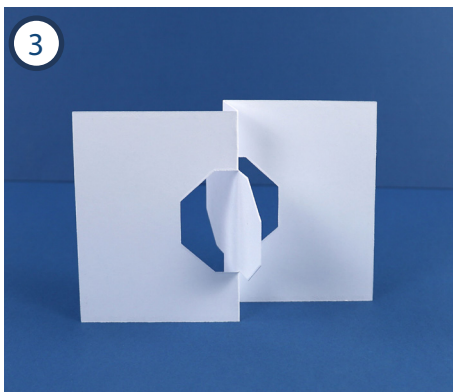
Floral Interlinked Card Shape



1
To create a simple Z-fold card, cut the card shape die with two opposing edge dies slotted into the Link System.



2
Valley and mountain fold along the score lines.



3
Decorate the card as desired.

Top Tip: Using different combinations of the edge and score line dies in the Link System, the Floral Interlinked Card Shape can be used to create easel cards, swing easel cards, and more.