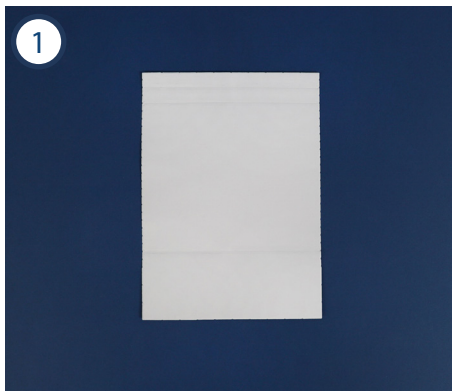
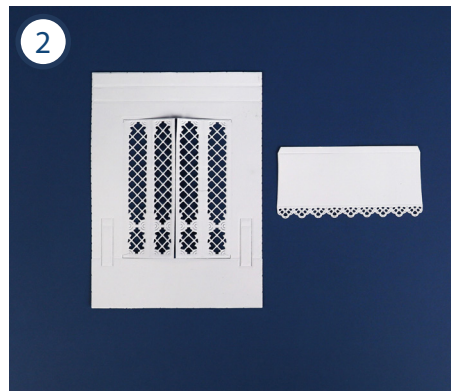


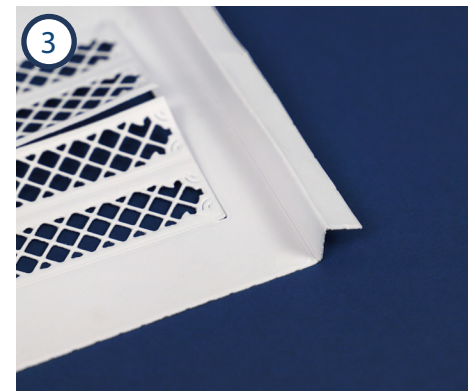
# Michelle's Café



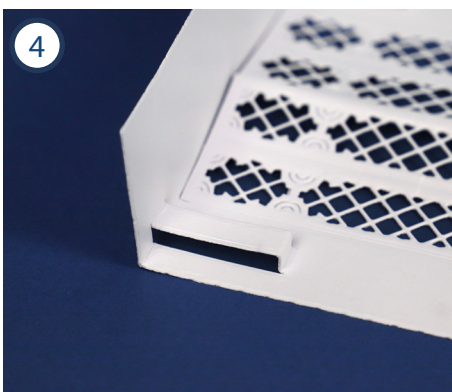
1 Cut die A with the three score line dies placed into the notches of the Link system.



2 Cut again, replacing the score line die in the bottom notch with die B. Cut die C.



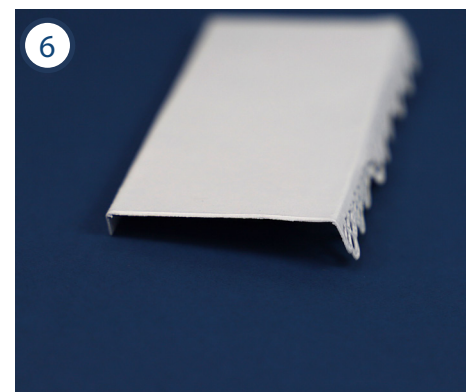
3 Valley and mountain fold along the parallel score lines of the A die cut with the doors.



4 Valley fold the remaining score line, ensuring the pop out sections stand out at right angles as shown.

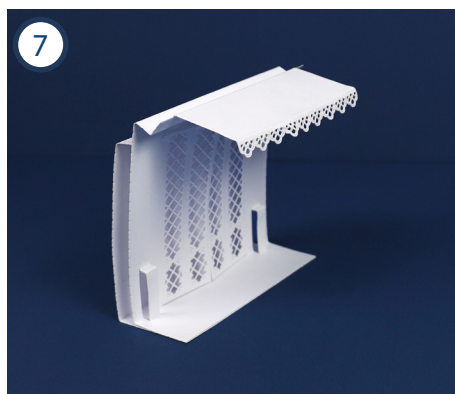


5 Fold the score lines of the A die cut made in step 1 in the same fashion.

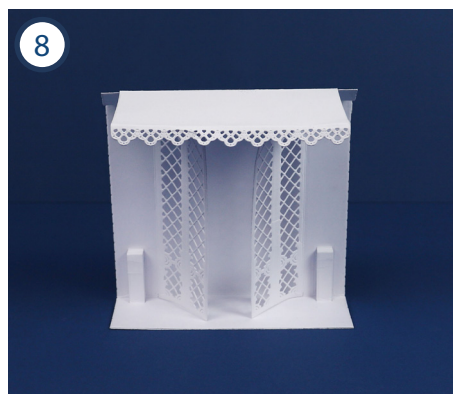


6 Fold the score lines of the C die cut as shown to create a canopy.

# Michelle's Café



Stick the A die cut with doors into the other A die cut, using the flat face of the top folded section braced against the back of the café front. Stick the canopy on top.



Open out the doors and decorate as desired using the embellishment dies.