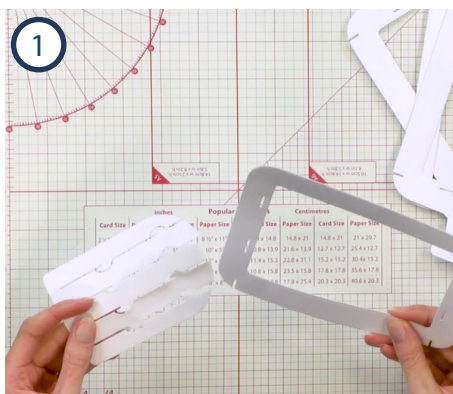
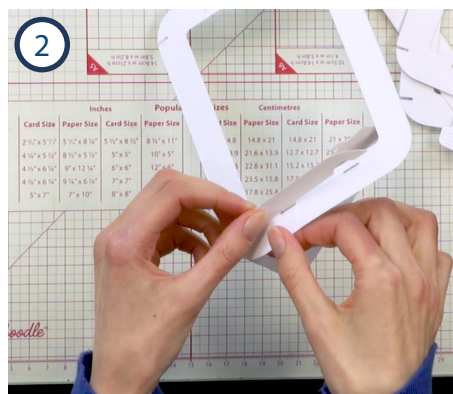


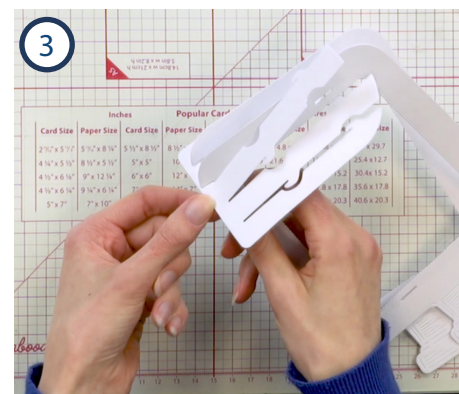
Picture Getaways



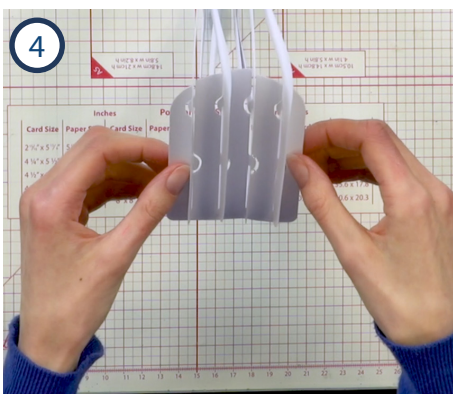
1 Cut the large bottle and rectangle frame with slits together four times. Cut the arched die twice to create two sides.



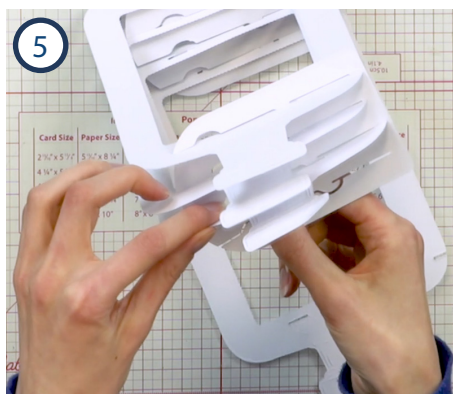
2 Slide one of the bottles into one of the sides, sliding it to the bottom of the gap until the small slit at the bottom is secured into the base of the gap. Attach the hooks into the two slots.



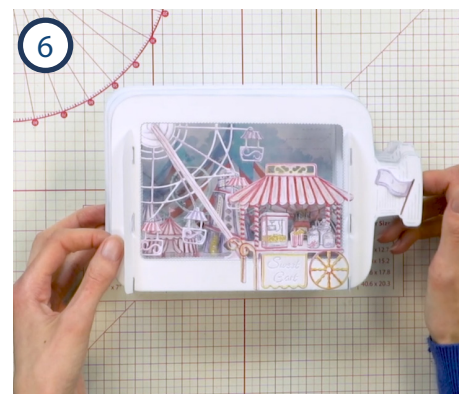
3 Continue with the remaining bottle pieces, sliding fully into the gaps of the side piece and using the hooks to secure.



4 Ensure that each bottle piece is secure in the side piece.



5 Using the other side piece, do the same for the other ends of the bottle-shaped layers.



6 Decorate your completed frame using the different layers to vary the depth of your background.