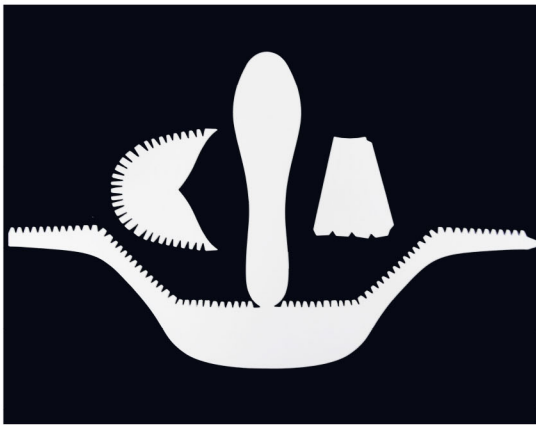
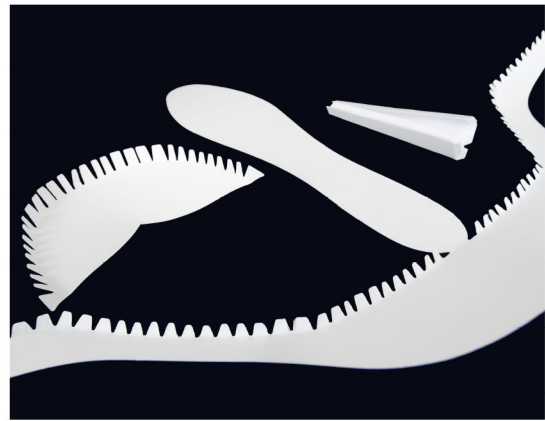


3D Shoe Instructions



1. Cut the shoe from your chosen cardstock.



2. Fold along all the crease lines of the flaps on your cut as well as the ones on the toe and heel cuts.



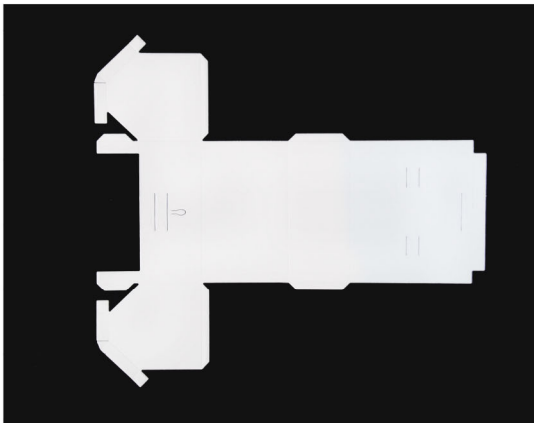
3. Apply glue to the flaps on the shoe and toe. Carefully secure the flaps along the edge of the shoe sides to the sole on the inside. Secure the toe piece to the inside of the shoe sides and glue the long edge of the heel.



4. Secure the heel to the sole of your shoe using the flaps at the thicker end of the cut. Your shoe is now complete and can be decorated using the accessories.

Designs for illustration purposes only.

3D Toolbox Instructions



1. Cut the toolbox from your chosen cardstock.



2. Fold along all the crease lines and secure the side panels to the front and back of the tool box by applying glue or adhesive tape to the flaps.



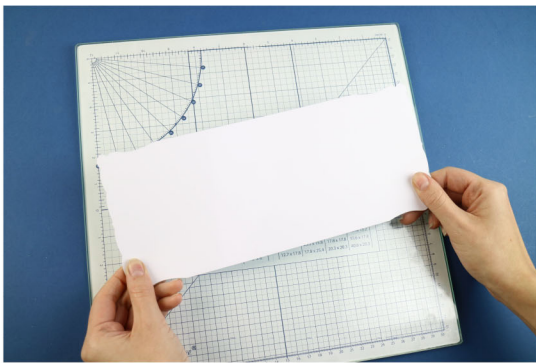
3. Secure the tabs at the top of each side panel in place by applying glue or adhesive tape to the flaps.



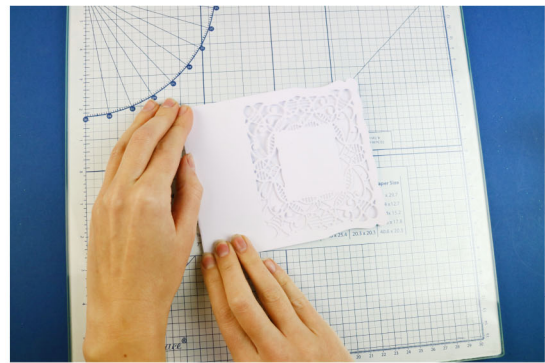
4. Add your handles through the slits at the top of your tool box lid and secure in place using the tabs at the base of each handle. Push the buckle strap through the slit on the top front of the lid and secure in place on the inside.

Designs for illustration purposes only.

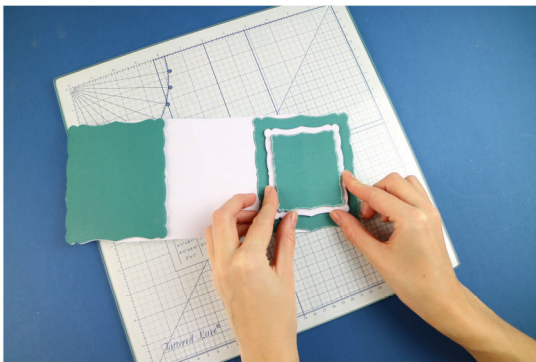
Antique Bobbin Craft A Card Instructions



1. Cut one base card from your chosen cardstock.



2. Cut into the left end of the card base with your chosen decorative frame. Then score and fold to create a card shape.



3. Using the nested frames, cut from your chosen colours and decorate the card. For example mat and layer onto the inside back of the card with foam pads. You could also cut one frame and mat behind the decorative front of the card.



4. Using the embellishments, cut from your chosen colours to decorate the card.

Designs for illustration purposes only.

Arched Card Instructions

Cut the Arched Card from your chosen cardstock to create a variety of shaped cards and embellish as required.



Designs for illustration purposes only.

Book Instructions

Cut the Book from your chosen cardstock to create a variety of shaped cards and embellish as required.



Designs for illustration purposes only.

Card Front Queen Ann Instructions

Cut the Card Front from your chosen cardstock to create a variety of shaped cards and embellish as required.



Designs for illustration purposes only.

Card Front Sabrina Instructions

Cut the Card Front from your chosen cardstock to create a variety of shaped cards and embellish as required.



Designs for illustration purposes only.

Card Front Sweetheart Instructions

Cut the Card Front from your chosen cardstock to create a variety of shaped cards and embellish as required.



Designs for illustration purposes only.

Card Shapes Instructions

Cut the Card Shape from your chosen cardstock to create a variety of shaped cards and embellish as required.



Designs for illustration purposes only.

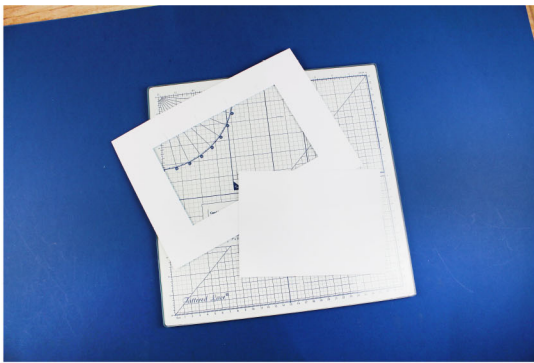
Circle Jigsaw Instructions

Cut the Jigsaw from your chosen cardstock to create a variety of shaped cards and embellish as required.

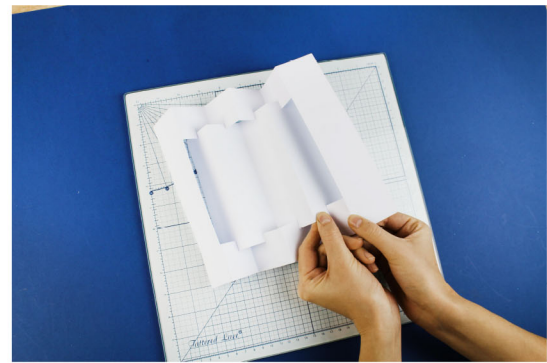


Designs for illustration purposes only.

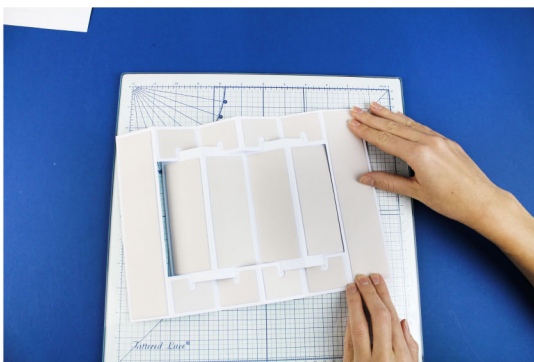
Concertina Card Instructions



1. Cut one Large Concertina Card and one Large Concertina Insert from your chosen cardstock.



2. Using the Large Concertina card, fold along the score lines. From the left, mountain fold, then valley fold. Carry on until all score lines are folded. Repeat for the Large Concertina Insert. Slot the insert into the slits on the Large Concertina Card.



3. Using the Mats, cut from your chosen colour cardstock and mat onto the corresponding panel.



4. Decorate the insert with the panels. Finish with paper flowers.

Designs for illustration purposes only.

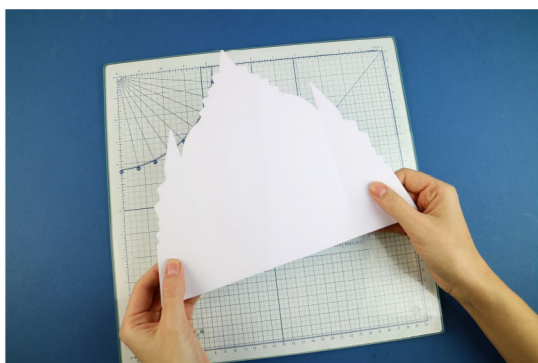
Continuous Jigsaw Instructions

Cut the Jigsaw from your chosen cardstock to create a variety of shaped cards and embellish as required.

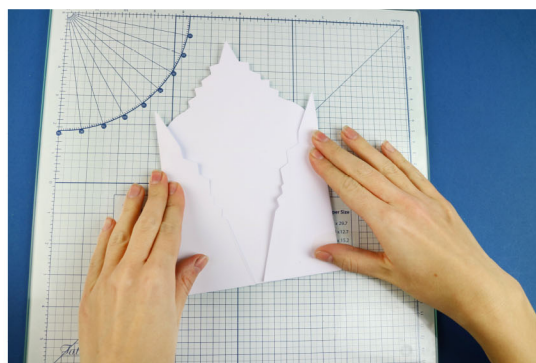


Designs for illustration purposes only.

Deco Gatefold Card Instructions



1. Cut one Deco Gatefold from your chosen cardstock.



2. Using the score lines on either side of the card, fold the sides in towards the centre (this fold is called a valley fold).



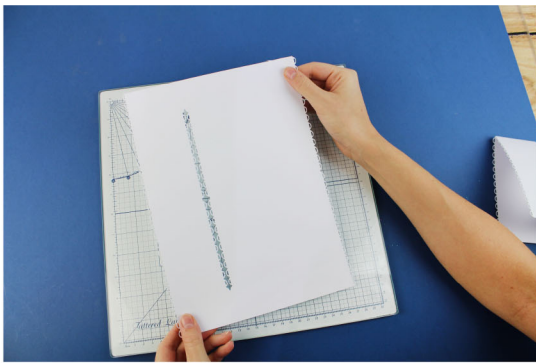
3. Using the decorative designs, add mats and embellishments to decorate.



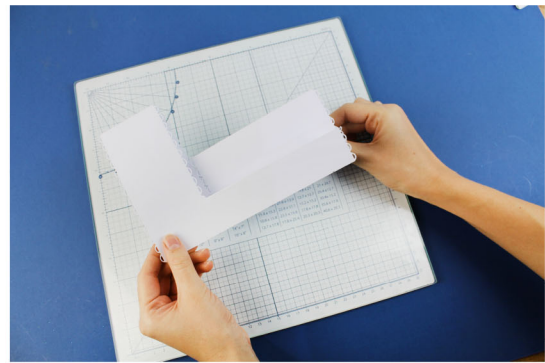
4. Your Deco Gatefold is now complete.

Designs for illustration purposes only.

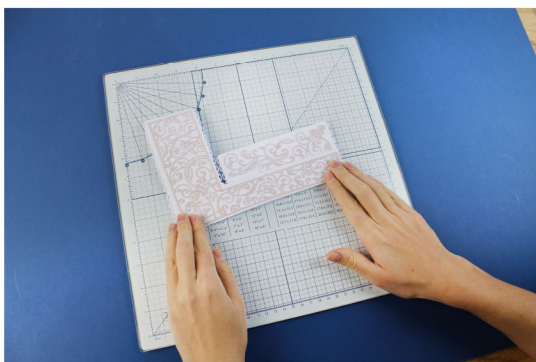
Decorative Side Stepper Instructions



1. Cut one card base from your chosen cardstock.



2. Fold along the score lines of the card. Starting from the bottom; mountain fold, then valley fold, mountain fold again, valley fold and finally valley fold to create the Decorative Side Stepper.



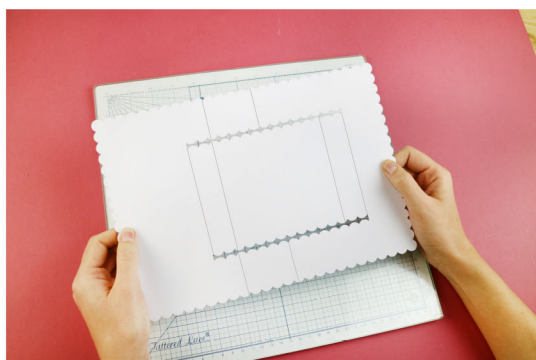
3. Using the decorative panels, decorate the card.



4. Decorate the card with other embellishments and sentiments to finish the card.

Designs for illustration purposes only.

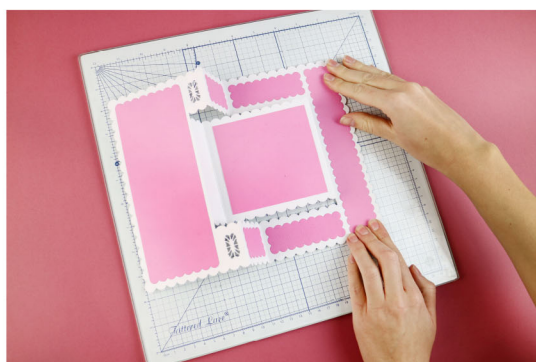
Decorative Trifold Card Instructions



1. Cut one from your chosen cardstock. The score lines have been highlighted for you for this demonstration.



2. Mountain fold and valley fold along the score lines as shown to create a tri-fold shaped card.



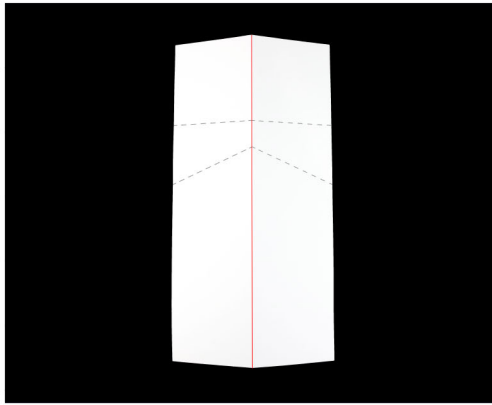
3. Decorate the card with its co-ordinating files.



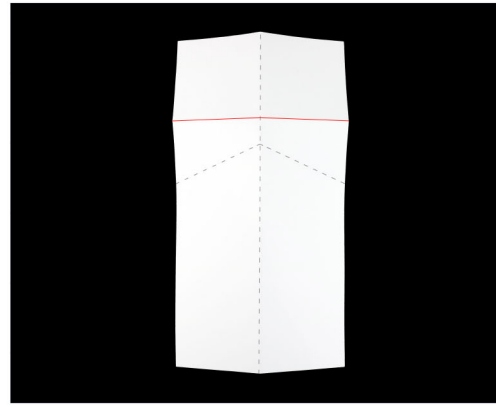
4. The Decorative Trifold Card is now complete.

Designs for illustration purposes only.

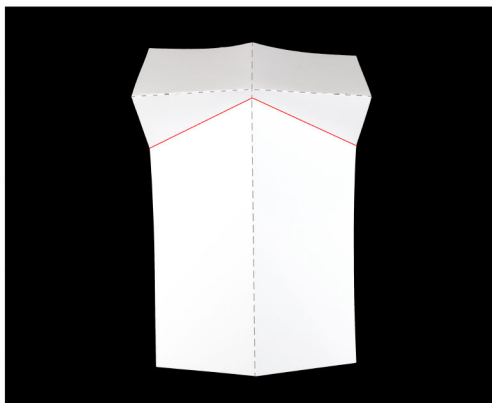
Diamond Top Instructions



1. Cut one from your chosen cardstock. Mountain fold along the middle score line as illustrated.



2. Mountain fold along the top score line as illustrated.



3. Valley fold the two diagonal score lines as illustrated. Push these inwards to create the diamond shaped top of the card.



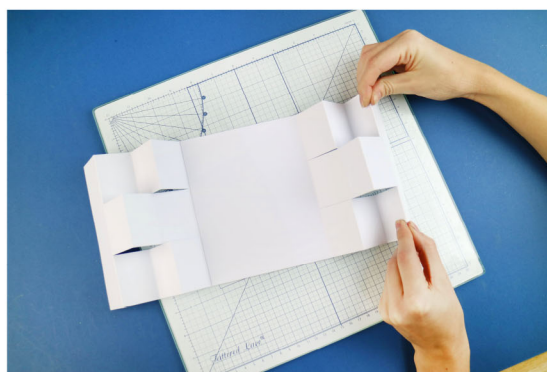
4. Decorate your card using the mats, butterflies, florals and sentiments included.

Designs for illustration purposes only.

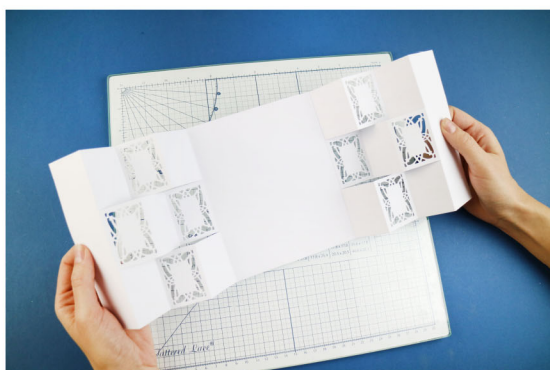
Double Shutter Card Instructions



1. Cut the Base twice from your chosen cardstock.



2. Mat the two plain sides of the bases together to create the card back. Starting from the left score lines, the first three are mountain folds, the second two are valley folds, the following two are mountain folds and finally valley fold the inside back of the card. Turn the card around and repeat for the other side.



3. Using the plaque, cut into the shutters as shown.



4. Using the plaques, decorate the shutter card in your chosen colours.

Envelope Closure Instructions

Cut the Envelope Closure from your chosen cardstock to create a variety of projects.



Designs for illustration purposes only.

Flectere Box Instructions



1. Using the Flectere Box cut the following from your chosen. Using the Box Side, cut one to create the back of the box. Using the Box Side, Heart Panel and Mat 1-2 together, cut three to create the other three sides of the box. Using the Lid Top, cut two to create the top and the bottom. Using the Lid Side 2, cut 8 to create the lid sides.



2. Take four of the Lid Sides, fold along the score lines and attach the long tabs the edges of one of the Lid Tops. Stick the small corner tabs together to form the lid. Repeat this with the other Lid Sides and Lid Top. Take all the box sides and attach together using the tabs to make the box. Slot the box into an upturned lid with the solid side at the back. Place your project inside the box.



Designs for illustration purposes only.

Flourish Gateway Instructions

Cut the Flourish Gateway from your chosen cardstock to create a variety of projects.



Designs for illustration purposes only.

Handbag Instructions



1. Cut one handbag from your chosen cardstock. Secure the tabs at the bottom of both of the side panels to the base of the handbag using glue or adhesive tape.

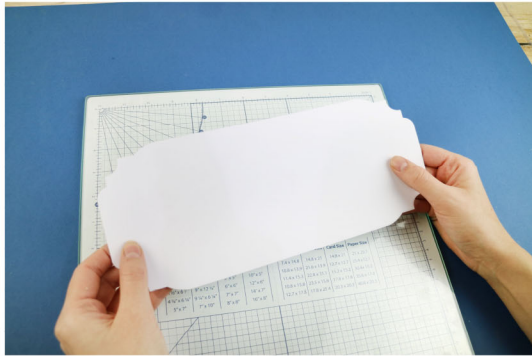


2. Attach the back of the handbag to the side panels using the flaps at the end of the sides with glue or adhesive tape.

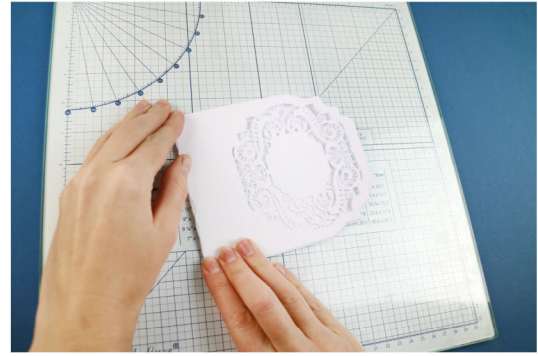


3. Decorate your handbag using the embellishments.

Handkerchief Card Instructions



1. Cut one base card from your chosen cardstock.



2. Cut into the left end of the card base with your chosen decorative frame. Then score and fold to create a card shape.



3. Using the nested frames and embellishments, cut from your chosen colours and decorate the card.



4. Your card is now complete.

Designs for illustration purposes only.

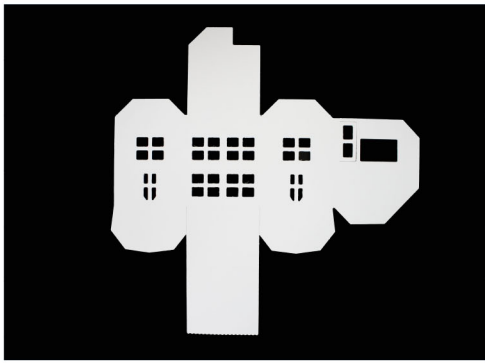
Heart Jigsaw Instructions

Cut the Jigsaw from your chosen cardstock to create a variety of shaped cards and embellish as required.



Designs for illustration purposes only.

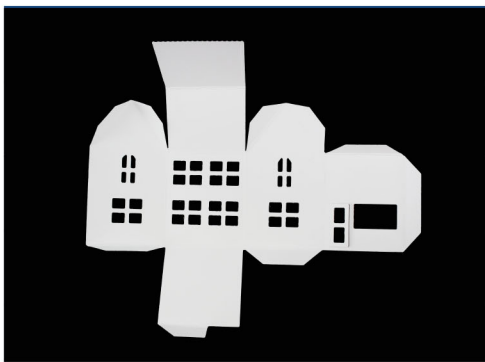
House Instructions



1. Cut one from your chosen cardstock.



2. Secure each tab to the corresponding edge it meets when you have created the folds. Use the guide to secure them correctly.



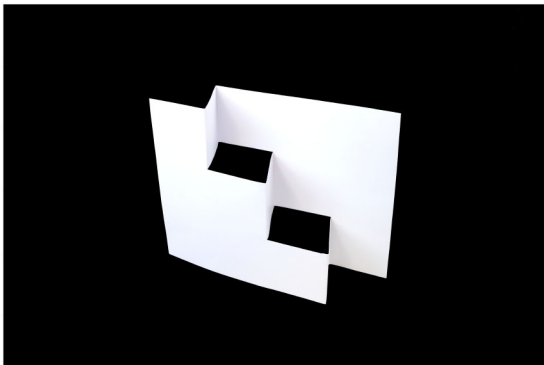
3. Create a mountain fold where each of the scored lines from your cut appear and apply adhesive to the tab created after folding.



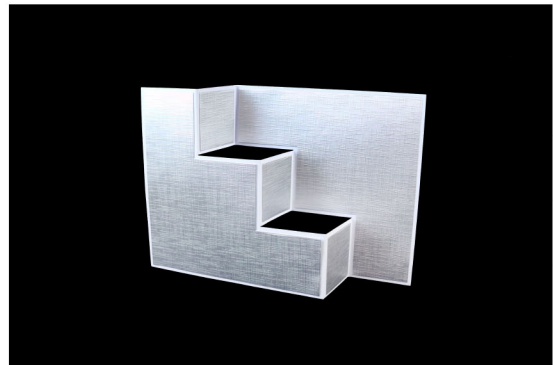
4. Decorate the house with your chosen embellishments. Why not use a scalloped border to create roof tiles and canopy.

Designs for illustration purposes only.

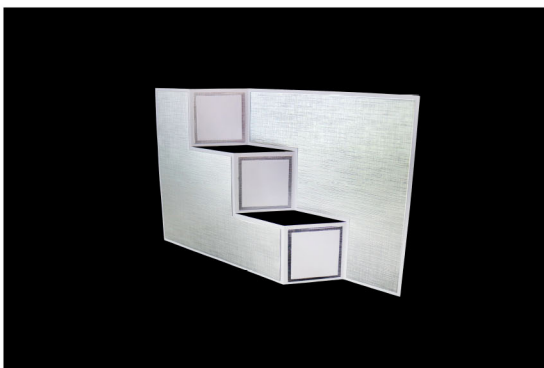
Kaleidoscope Card Instructions



1. Cut the base card from your chosen cardstock. To fold the card into place, start from the top edge as shown. Mountain fold the first score line and valley fold the second. Repeat for the other two sets of score lines to create a stepped effect.



2. Cut two Mat 1 from silver card and mat onto the front and back panel of the stage card as shown. Cut three Mat 2-8 from silver cardstock. Mat onto the square panels as shown.

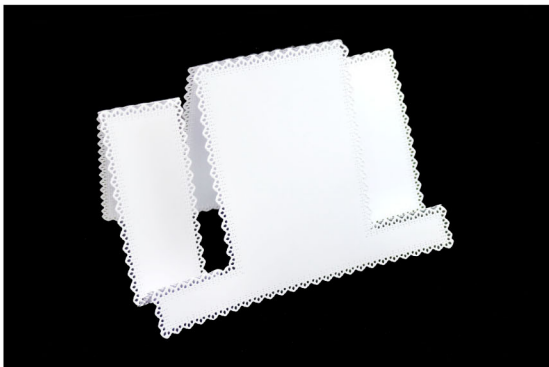


3. Cut two Mat 2-7 from white cardstock and mat onto the silver squares as shown.



4. Cut two Lace Panel 1 from pink cardstock and mat onto the front and back panels of the stage card. Cut one Mat 2-6 from pink cardstock and mat onto the centre square panel. Cut two Lace Embellishments from pink cardstock and mat onto the remaining two square panels. Decorate as required.

Lace Inset Stepper Instructions



1. Cut the base card from your chosen cardstock. To fold the card into place, start from the bottom edge with the nearest score lines to the edge. Mountain fold on those two small score lines, either side of the centre. Valley fold the next two score lines. Mountain fold the centre score line and the remaining score lines either side.



2. Cut two Mat 2-3 from blue cardstock and mat onto the columns either side of the centre. Cut Lace Panel 1 from blue cardstock and mat onto the front of the card.



3. Cut two Mat 3 from white cardstock and mat onto the card. Cut two Mat 2-1 from blue cardstock and mat onto the card.



4. Cut Embellishment 3 from blue cardstock. Cut a sentiment from white cardstock and mat onto the embellishment. Mat onto the front of the card. Finish with pearls.

Lacy Jigsaw Instructions

Cut the Jigsaw from your chosen cardstock to create a variety of projects.



Designs for illustration purposes only.

Mini Jigsaw Instructions

Cut the Jigsaw from your chosen cardstock to
create a variety of projects.



Designs for illustration purposes only.

Nested Envelope Instructions

Cut the Nested Envelope from your chosen cardstock to create a variety of projects.



Designs for illustration purposes only.

Ornamental Easel Card Instructions

Cut the Ornamental Easel Card from your chosen cardstock to create a variety of shaped cards and embellish as required.



Designs for illustration purposes only.

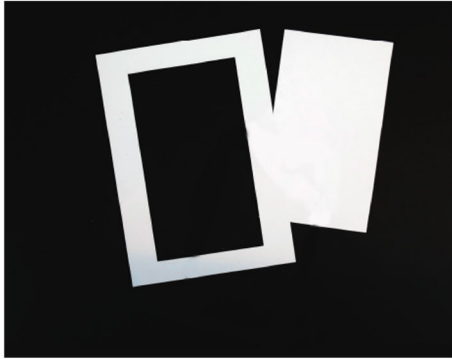
Oval Frame Instructions

Cut the Oval Frame from your chosen cardstock to create a variety of shaped cards and embellish as required.

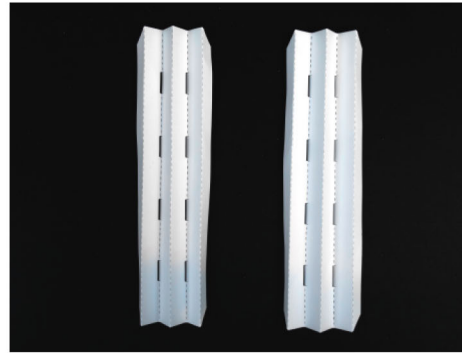


Designs for illustration purposes only.

Panorama A5 Instructions



1. Create 2 rectangles measuring 14.8cm x 21cm or 5 7/8" x 8 1/4". Cut an aperture into one of the rectangles Large inner Plate to create a frame. The size of the frame is your decision. Keep the remaining rectangle for step 3.



2. Fan-fold along the score lines on both concertina sides, as shown. This will create flaps that will join the concertina sides to the frame and the back of the card.



3. Attach one of the outer flaps from both of the concertina sides to opposite sides of the solid rectangle. Take care to ensure that both of the concertina sides are facing the correct way, this will allow the inner plates to sit into the concertina sides correctly.



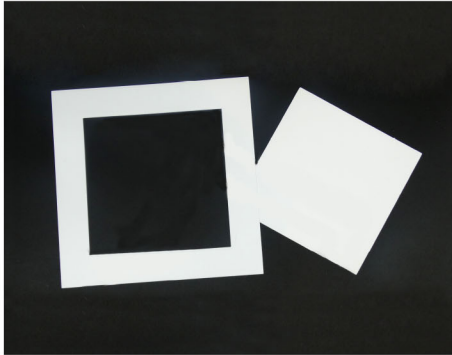
4. Cut apertures into your inner plates and cut them to create a landscape effect. Place the hooks of the inner plates into the slits on one side of the concertina sides. Repeat for the second side. Attach the remaining flaps to the back of the rectangle frame.



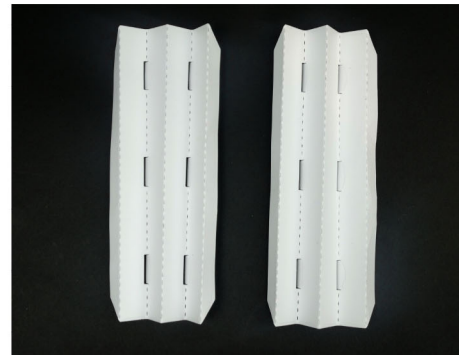
Top tip:
You can create apertures inside your inner plates using either the circle, oval, square or rectangle nested die sets, or even cut shapes or lines. This will enable you to create a wide range of designs.

Designs for illustration purposes only.

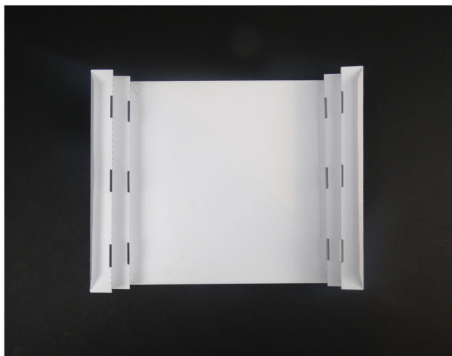
Panorama Instructions



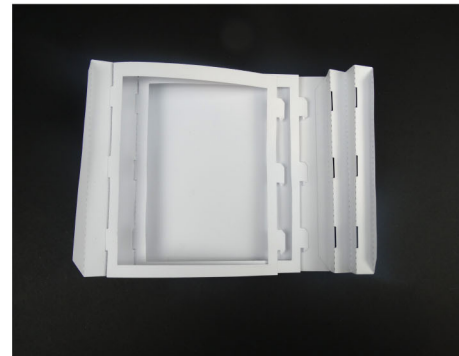
1. To create your Panorama Frame you will need to cut the following from your chosen cardstock: 2 x Concertina sides, 2 x Inner plates, 2 x 15cm Squares. Cut an aperture into one of the squares to create a frame. The size of the frame is your decision. Keep the remaining square for step 4.



2. Fan-fold along the score lines on both concertina sides, as shown. This will create flaps that will join the concertina sides to the frame and the back of the card.



3. Attach one of the outer flaps from both of the concertina sides to opposite sides of the solid frame. Take care to ensure that both of the concertina sides are facing the correct way, this will allow the inner plates to sit into the concertina sides correctly.



4. Cut apertures into your inner plates and cut them to create a landscape effect. Place the hooks of the inner plates into the slits on one side of the concertina sides. Repeat for the second side. Attach the remaining flaps to the back of the square frame.



Top tip:
You can create apertures inside your inner plates using either the circle, oval, square or rectangle designs, or even cut shapes or lines. This will enable you to create a wide range of designs.

Designs for illustration purposes only.

Picture Perfect Circle Instructions

Cut the Picture Perfect Circle from your chosen cardstock to create a variety of shaped cards and embellish as required.



Designs for illustration purposes only.

Picture Perfect Rectangle Instructions

Cut the Picture Perfect Rectangle from your chosen cardstock to create a variety of shaped cards and embellish as required.



Designs for illustration purposes only.

Picture Perfect Square Instructions

Cut the Picture Perfect Square from your chosen cardstock to create a variety of shaped cards and embellish as required.



Designs for illustration purposes only.

Pop Up Word Instructions



1. Cut your pop up word from your chosen cardstock.



2. Use a ruler to help fold along the score lines of the pop up words. Valley fold the first score line, then mountain fold the second that is on the top of the letters.



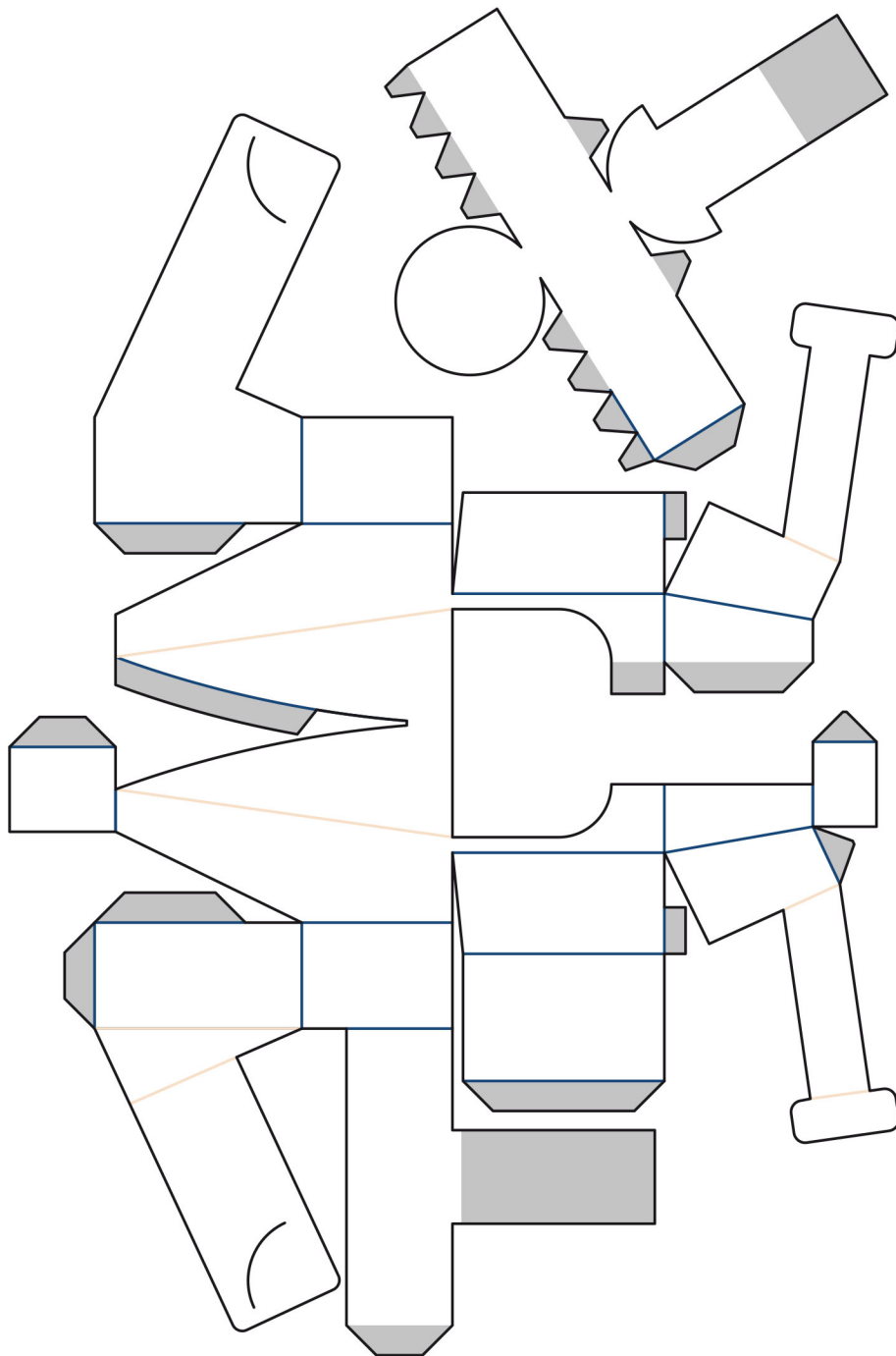
3. Continue this folding technique on all of the score lines to create a pop up word card.



4. Your pop up word is now complete.

Designs for illustration purposes only.

Racing Car Instructions

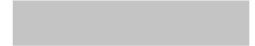


KEY

GLUE

MOUNTAIN FOLD

VALLEY FOLD



Use the above key as a guide to constructing your Racing Car.

You will need to cut 4 of the wheels to create your completed racing car.



Join the rear wing end plates using the rear spoiler.

Designs for illustration purposes only.

Rose Gateway Instructions

Cut the Rose Gateway from your chosen cardstock to create a variety of projects.



Designs for illustration purposes only.

Square Jigsaw Instructions

Cut the Square Jigsaw from your chosen cardstock to
create a variety of projects.



Designs for illustration purposes only.

Stationery Box Instructions



1. Cut 2 bases from your chosen cardstock and mountain fold all the score lines. Set one of your cuts aside and snip away the 2 square flaps from the remaining cut as shown on the left.



2. Using the cut you set aside in step 3, glue the square flaps to the adjacent flap which runs along the entirety of one end. Using your second cut glue the same flap over the top to cover where the squares have been secured in place.



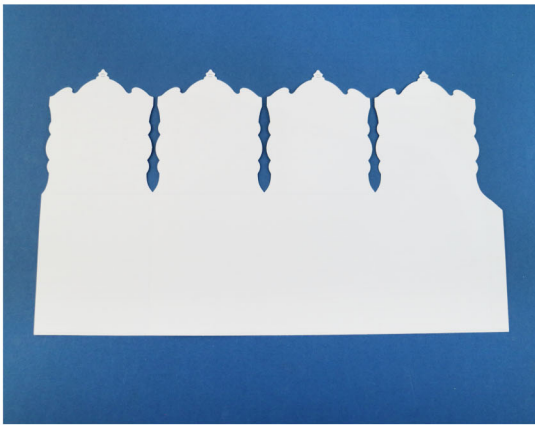
3. Cut one lid from your chosen cardstock. Mountain fold all the score lines. Fold the end flap which is attached to the central square through 90 degrees and glue the central square fold to the inside solid section of the lid.



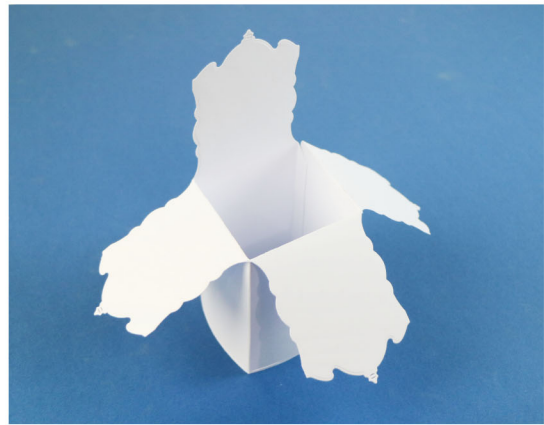
4. Your stationery box is now complete.

Designs for illustration purposes only.

Steampunk Pop Up Box Instructions



1. Cut the base from your chosen cardstock.



2. Fold along the score lines as shown and mat the tab onto the corresponding side to create the pop up box. Fold down the three flaps ensuring one at the back is straight.



3. Mat the tabbed strips onto the inside of the box. Cut mats from a steampunk backing paper and mat onto the box with foam pads. Using the Steampunk embellishments, cut from black and gold mirror card. Rub the edges of the black cuts with gold gilding wax. Cut strips of acetate and mat the cuts onto one end and mat the strips onto the tabbed strips inside the box. Decorate the box with other embellishments and a sentiment.



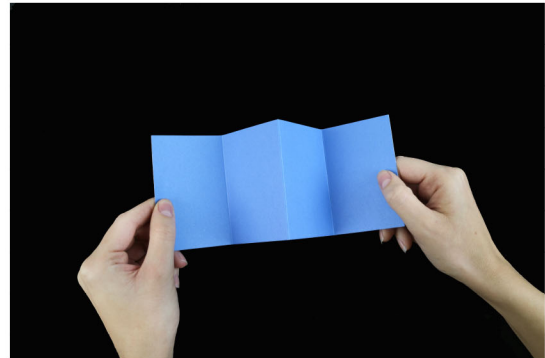
4. Your Steampunk Pop Up Box is now complete.

Designs for illustration purposes only.

Twist & Pop Card Instructions



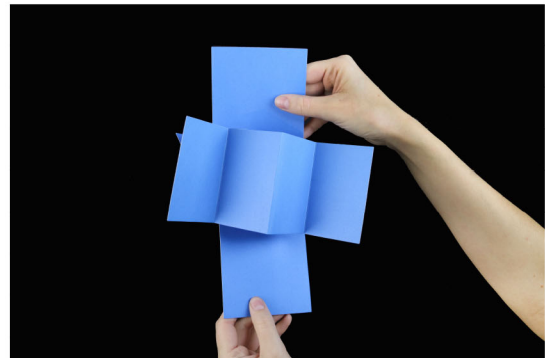
1. Cut the base and pop up from your chosen cardstock. Valley fold and mountain fold along the score lines of the base card to create a pointed tent card.



2. Valley fold and mountain fold along the score lines of the pop up to create a concertina effect as shown.



3. Open up the folded tent card and attach tape to the bottom panel of the tab on the left, and the top panel of the tab on the right as shown.



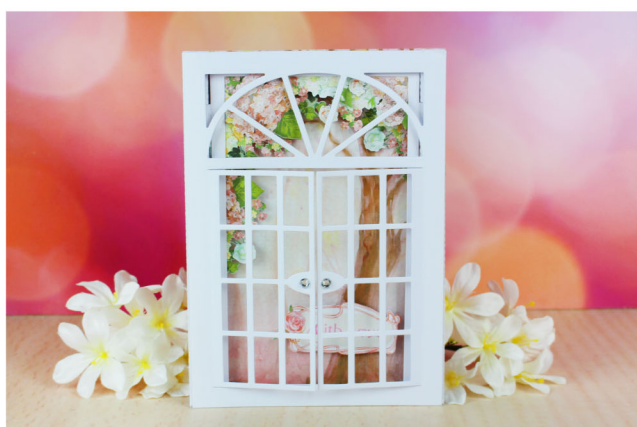
4. Using the folded pop up, line up the centre score line with the centre of the base card and mat onto the two taped areas of the card. Gently lift the centre fold of the pop up to ensure the card closes easily. Your twist and pop card is now complete.



Designs for illustration purposes only.

Window Instructions

Cut the Window from your chosen cardstock to create a variety of shaped cards and embellish as required.



Designs for illustration purposes only.