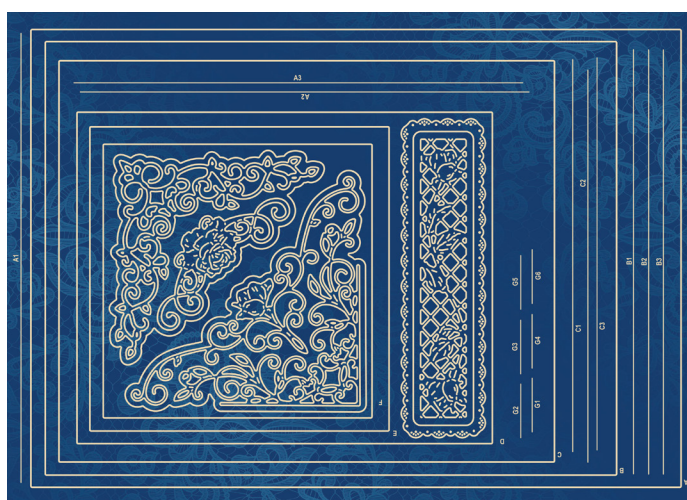


Stylised Aperture Card Shape



To make a larger card:

Use A to make the card blank, using A1 to create fold in middle.

Use A again combined with D, using A1 and A2 at each end to create tabs, then G1 and G2 to create fold in the centre.

Use B and E to create a smaller aperture, using B1 and B2 to create tabs on each end, then G1 and G2 to create fold in the centre.

Fold all the elements and fold all tabs inwards so you won't be able to see them.

Align the larger aperture along the edge of the card blank on one side where the tab fold is. Then stick the smaller aperture 1cm away from the end of the tab on the larger aperture. Repeat this on the other side to make the card.

To make a smaller card:

Use B to make the card blank, using B1 to create fold in middle.

Use B again combined with E, using B1 and B2 at each end to create tabs, then G1 and G2 to create fold in the centre. Use G3, 4, 5 and 6 if you want additional folds to create a V shape in the centre that goes inwards.

Use C and F to create a smaller aperture, using C1 and C2 to create tabs on each end, then G1 and G2 to create fold in the centre.

Fold all elements and fold all tabs inwards so you won't be able to see them.

Align the larger aperture along the edge of the card blank on one side where the tab fold is. Then stick the smaller aperture 1cm away from the end of the tab on the larger aperture. Repeat this on the other side to make the card.