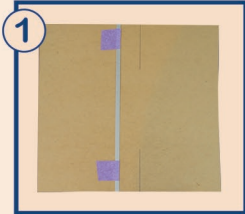


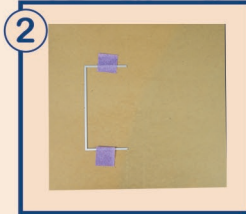
# Using Tattered Lace® Swing Adapter Dies

Tattered Lace® Swing Adapters have been designed to make swing cards, K cards and many other shaped cards incredibly easy to make by taking away the need for tricky measuring. Here's how to use them alongside the Essential half Shape dies:

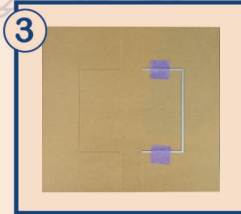
## How to make a Swing Card:



1 Decide which half shape you wish to use and place the Swing Adapter with the co-ordinating gap on your card. Run through the machine to create your score line.



2 Place the matching half shape on the card in the gap of the score line and run through to create your first swing panel.



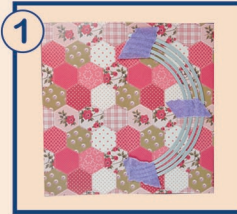
3 Repeat steps 1 & 2 to create a second swing panel at the same distance from the opposite edge of your card.



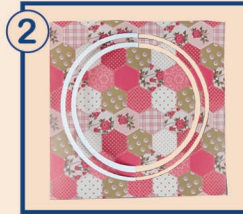
4 Your swing card is now ready to decorate as required.

## How to create a Lace style card:

1 Cut a square of backing paper. Decide which half shapes you wish to use and place the Swing Adapter with the matching gap to co-ordinate with the smallest of your chosen half shapes on the paper. Run through the machine to create your score line.



1 Place the consecutive dies on the paper and up to the score line as shown. Run through your machine to cut.

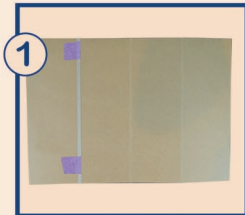


2 Fold the largest and smallest half shapes back on the score line as shown to create the Lace style finish.

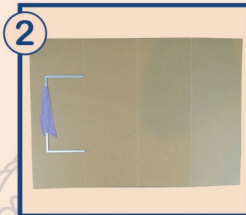


3 Decorate as required with matting & layering and embellishments to finish your topper and add to your card.

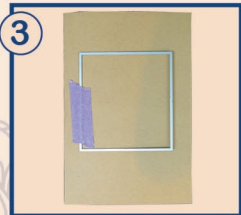
## How to make an A5 K Card:



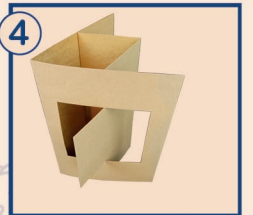
1 Fold an A4 sheet of card in half, fold one half in half again. Place the required Swing Adapter at the halfway point of the other half and run through the machine.



2 Place the matching half shape on the card in the gap of the score line and run through to create your interior K panel.



3 Fold a second A4 sheet of card in half and cut an aperture in the front that is aligned with the half shape on the K section.



4 Secure the two outer sections of the K card section to the inner edges of the aperture card. Your K panel should pop through the aperture.

We hope you find this guide helpful, if you require any additional help please email [info@tatteredlace.co.uk](mailto:info@tatteredlace.co.uk) or call 01246 251212

*Tattered Lace* **DIES**  
Designed by Stephanie Weightman  
[www.tatteredlace.co.uk](http://www.tatteredlace.co.uk)